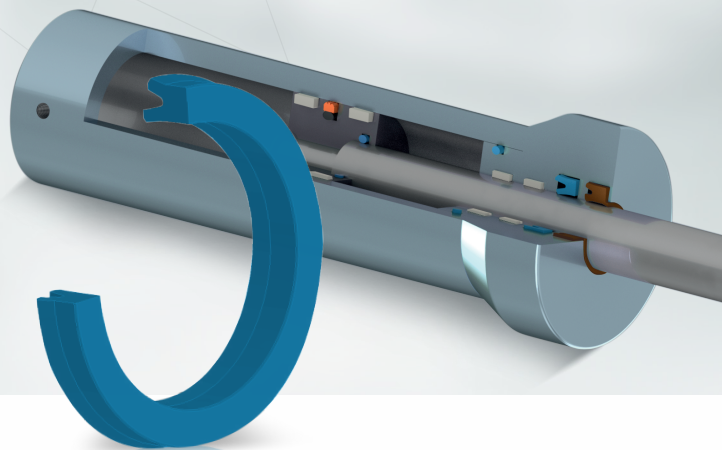




# Single-acting Piston Seals for ISO Grooves



- Outstanding abrasion and extrusion resistance
- Wide range of fluid compatibilities
- Materials available for extended fluid compatibility required in food technology and biodegradable hydraulic media
- Ease of installation and assembly
- Pistons do not have to be divided for assembly of the seal
- Custom dimensions can be delivered quickly by lathe cutting capabilities

The FiPur® preferred dimensions of the double piston profile  
\*PS fit in the installation spaces according to DIN ISO 5597.

Like all sealing elements of the FiPur® family the piston seals provide maximum functional reliability, even under aggressive operating conditions.

Piston seals separate the two pressure chambers of the working piston in the cylinder from each other (rod side and bottom side).

## Application examples

FiPur® piston seals are used in long-lasting, low-maintenance hydraulic cylinders:

- Mobile and stationary hydraulics
- Construction machinery, agricultural and forestry machines, cranes, pumps, industrial trucks, etc.
- Presses, lifting tables, injection moulding machines

## Technical Data

|                       |   |
|-----------------------|---|
| Operating Temperature | -35°C – +110°C  |
| Permissible Pressure  | max. 400 bar  |
| Sliding Speed         | ≤ 0,5 m/s   |
| Media                 | Hydraulic oils based on mineral oil<br>** biodegradable media |

## Installation instructions

The profiles snap into the standard grooves according to ISO 5597 and ISO 7425-1. We recommend to avoid mounting the piston seal over sharp edges.

Sharp edges can result in damage of the wiper lips. Please note that the assembly forces with large profile cross-sections increase rapidly. Assembly aids are available. Consult Fietz for further information.

\* PS Piston Seal (single acting)    \*\* when using FiPur® 200

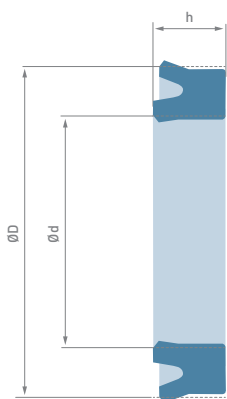


Fig. 1 Cross section of the Piston Seal

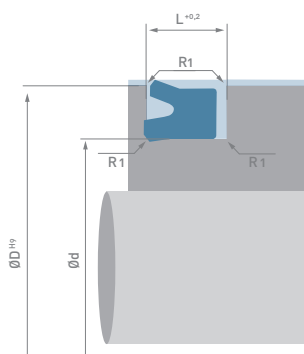


Fig. 2 Cross-section of the installation situation

Product Catalog

